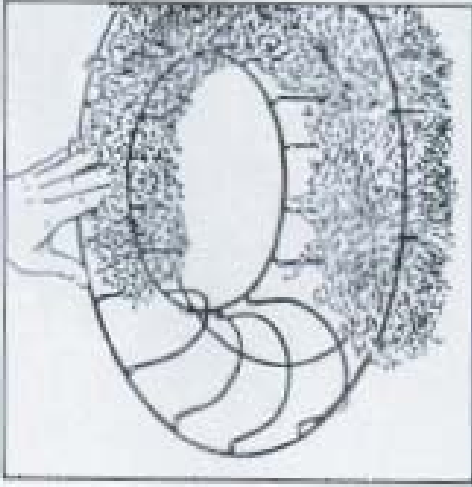
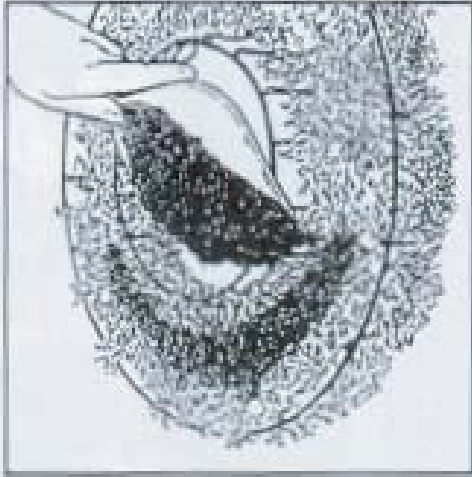


How to plant up a Living Wreath



1. Line the wire form with moistened moss.



2. Fill with potting soil and fertilizer mix.



3. Insert small plants (or seeds) and pack moss around them.



4. Gently position top of form over plants and clip into position.

21815 SW Farmington Rd. Beaverton Or. 97007



Phone: (503) 649-4568 Fax: (503) 649-4540